

# Atlas

★ American Lighting



# HAWK

SELECTABLE FLOOD

**CHANGE AT THE FLIP OF A SWITCH**



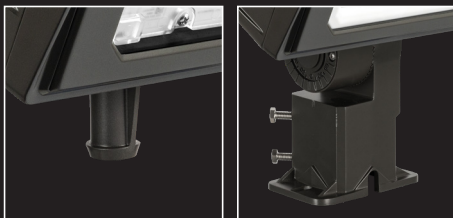
Reduce SKUs • Increase Turns • Drive Profitability



## CHANGE AT THE FLIP OF A SWITCH

### Mounting

Heavy Duty Knuckle or Predator - Slipfitter/Trunnion Mount



### Easy Access


Individual dip switches allow users to select color temperature and light output



200,000+ HOURS



# Strong

- 100% Pure Aluminum Housing
- Manufactured in the USA 
- Heavy Duty Knuckle or Predator Mount
- Up to 150 LpW
- Compact: 40% Smaller

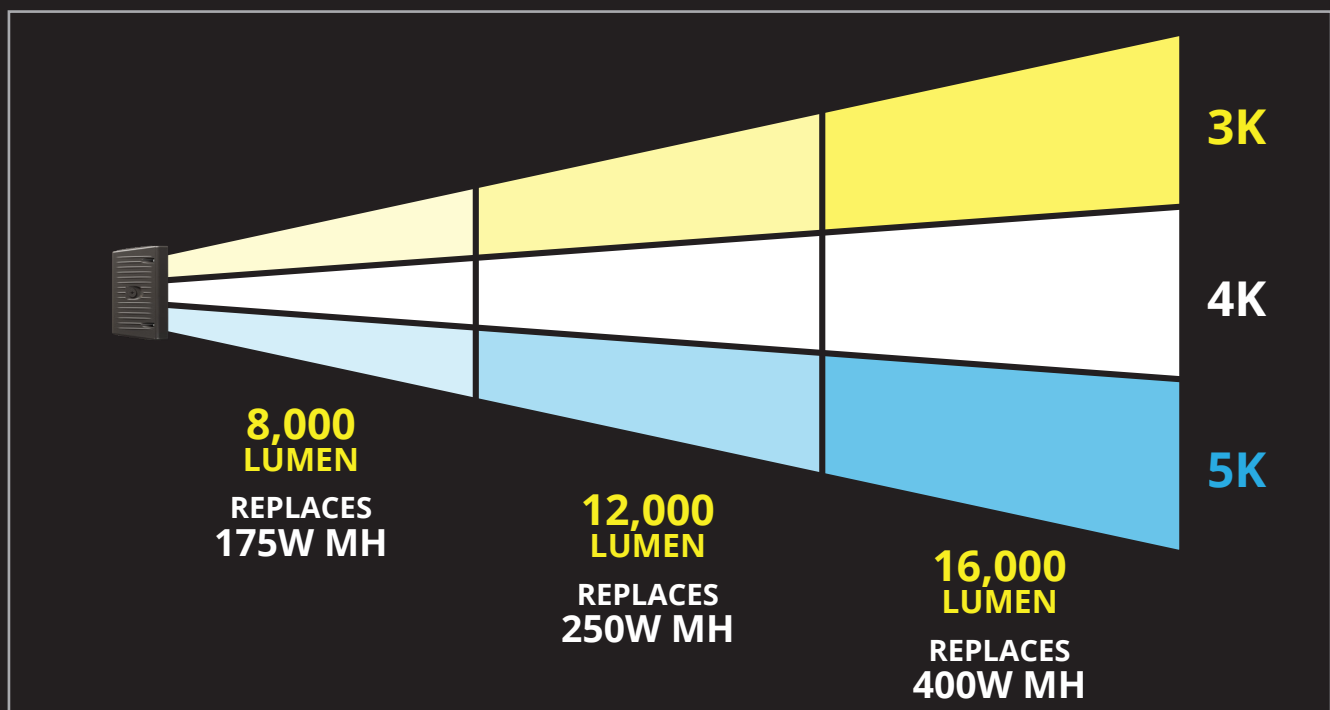
# Powerful

- Up to 16,000 Lumen Output
- USA Branded Driver
- XW - Extra Wide Distribution (7x7)
- XP - High Performance Extra Precision Optics Deliver More Footcandles (Available in 6x6 / 3x3 Coming Soon)

# Agile

- Selectable from 8,000 to 16,000 Lumens
- CCT Selectable: 3000K, 4000K, 5000K
- Reduce from 9 fixtures to 1
- Fast Shipping

**ONE FIXTURE DOES THE JOB OF NINE**





# Ordering Format

H	S	XW		8-16L					
PRODUCT SERIES	SELECTABLE	OPTICS	DISTRIBUTION <sup>1</sup>	LUMEN PACKAGE	COLOR TEMP.	CONTROLS	VOLTAGE	FIXTURE COLOR	OPTIONS
H = Hawk Flood Light	S = Selectable	XW = Extra Wide NEMA 7x7 XP = Precision Optics	6 = NEMA 6x6 <sup>1</sup> Precision Optics Only	8-16L = 8,000 - 16,000 Lumens Selectable	blank = Selectable 3000K, 4000K, 5000K	Blank = Dimming (0-10V) PC = 120V Photocontrol PM = 208-277V Photocontrol PR = Photo Receptacle* <i>*Must use adapter (TLRA-7P)</i>	Blank = 120-277 4 = 347/480	Blank = Bronze WT = White* BK = Black* SL = Silver* <i>*optional</i>	blank = Knuckle Mount T = Trunnion Mount



**XP**

**High Performance  
Extra Precision Optics**

**Narrow Pattern - Greater Intensity  
Available in 6x6**



6x6

**Applications**



**XW**

**Extra Wide  
Distribution (7x7)**

**Wider Pattern -  
Smooth & Even Coverage**



7x7

**Applications**



A portion of the proceeds from every Eagle and Hawk Series product sold will be donated to **Veterans Airlift Command**.

Hundreds of miles often separate our combat injured veterans from the care they need and the families that support them. **Veterans Airlift Command** is a nonprofit organization with a single mission: Give our veterans and their families a lift—at no cost. Because every flight will change a life.

VAC's network of volunteer pilots, aircraft owners, sponsors, and donors answer that call for our veterans when they need us most. Together, we lift them up.

**To learn more visit [www.veteransairlift.org](http://www.veteransairlift.org)**



PO Box 2348 | Burlington, NC 27216  
800-849-8485 | fax: 1-855-847-2794  
[www.atlasled.com](http://www.atlasled.com)  
452-283 091123

**FIXED VERSION  
ALSO AVAILABLE**

**SCAN QR CODE  
FOR MORE INFORMATION**



The majority of Atlas Lighting Products are assembled in USA facilities by an American Workforce utilizing both Domestic and Foreign components. Meets Buy American requirements within the ARRA.