

New Installation Services

Six Ways to Optimize Electrical Distribution Equipment Performance from the Start



Make the most of your energySM

Schneider
ElectricTM



Schneider Electric Field Services

offers a broad range of service solutions to support the life cycle of any manufacturer's electrical distribution equipment.

You can count on our nationwide network of professional engineers and qualified service representatives to help address your specific requirements and offer a complete, customized solution.

[Any brand. Any industry. Any time.]



Optimize Equipment Performance from the Start

At Schneider Electric, our goal is to keep your business up and running as efficiently as possible. By providing new installation services from the start, we help reduce your risks of costly downtime and delays.

If you are installing new equipment, it is key to consider the **following solutions to help maximize your investment:**

- > Engineering Studies
- > Start-up and Commissioning
- > Extended Warranty
- > Spare Parts
- > Training
- > Advantage Service Plans

Schneider Electric™ offers these services and more to help you throughout the life cycle of your equipment. You can rely on our nationwide network of professional engineers and qualified service representatives to validate that your new equipment is properly installed, employees are trained on its use and care, regularly-scheduled maintenance is performed, and the useful life of the equipment is extended.



New Installation Services from Schneider Electric

Your electrical distribution equipment

Greater productivity, reliability, and safety

Engineering Studies

Schneider Electric offers engineering analyses for your electrical distribution equipment to help optimize performance and reliability and meet applicable requirements for short-circuit protection, overcurrent device coordination, and arc flash hazard identification.

Protective device time-current coordination analysis

- A coordination analysis is performed to provide power equipment with the required protection and minimize service interruption under overload or short circuit conditions.
- This analysis evaluates an electrical system's protective devices including relays, fuses, circuit breakers, and the equipment to which they are applied.
- Our final report includes suggested settings for all adjustable devices as well as composite time-current characteristic curves which illustrate the resulting protection and system coordination.
- The optimal time frame to have a coordination analysis completed is prior to new equipment being shipped to the job site.

Short circuit analysis

- This study calculates fault-current levels throughout your electrical network to determine if the electrical equipment can withstand worst-case events.
- We identify underrated equipment and make recommendations to reduce high fault-current levels and comply with industry codes and standards.
- The optimal time frame to have a short circuit analysis completed is prior to the release for equipment manufacture.

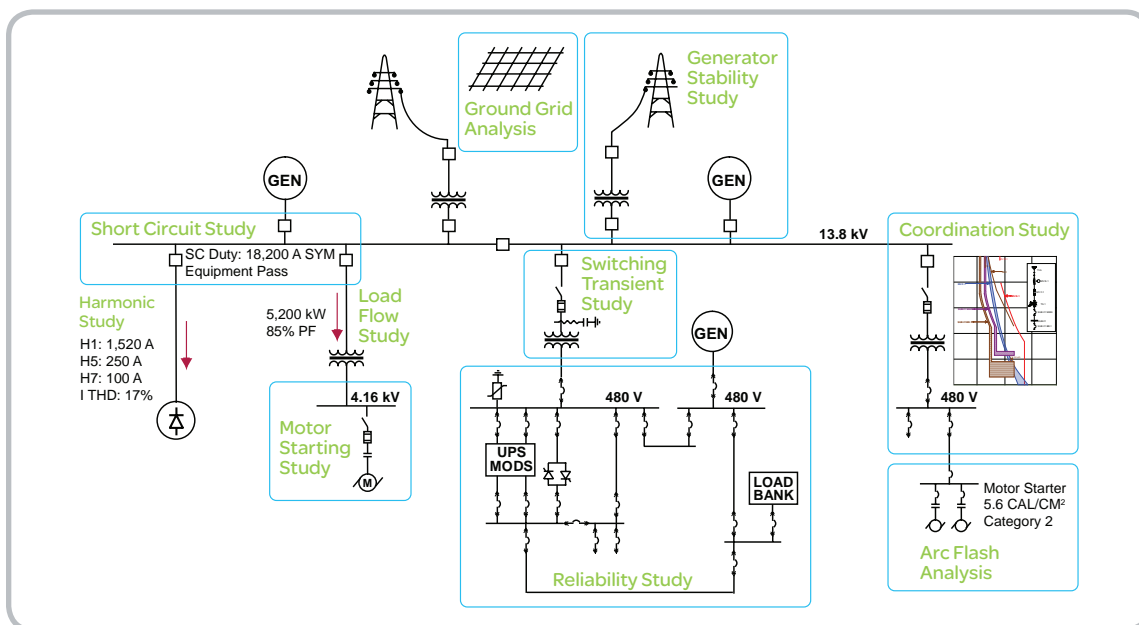
Arc flash analysis

- An arc flash analysis provides the basis for your facility's electrical safety program by identifying arc flash exposure levels at all points in your electrical system.
- We recommend methods to mitigate arc flash hazard exposure and reduce unacceptable incident-energy levels.

- Ideally, the arc flash analysis should be completed at the time of equipment installation. It can be performed in conjunction with the analysis of the balance of the facility's distribution system.

Why Schneider Electric?

- Our engineering studies are conducted early in the design stage for optimal results.
- We have over 40 years of industry experience, our services and solutions can support your complete power system engineering needs, from feasibility studies to fully-engineered turnkey projects.
- Our 100+ strategically-located professional engineers are collectively registered in every state of the U.S. to meet state licensing requirements.
- We have the expertise to meet your specific industry segment issues and opportunities.
- Use Schneider Electric as your one-stop-shop to assure compatibility and functionality between new equipment and existing systems.
- We also provide full-scope power system engineering support and solutions including grounding studies, reliability studies, and many more.



Since 1966, we've completed **thousands of power system studies** for our customers throughout the U.S.

Start-up and Commissioning

Schneider Electric confirms that your equipment is installed properly, meets factory standards, and passes our stringent performance tests to help minimize downtime and delays in the future.

Not only do we perform the standard electrical, mechanical, and visual equipment inspections, we also check the equipment and component to ensure they are set up and functioning correctly. Electrical testing is also performed to check insulation, current path, functionality, sequencing, etc., to minimize future downtime and expenditures.

Why Schneider Electric?

- We provide start-up and commissioning on any brand of equipment.
- Our nationwide expert technical team is available 24/7.
- NFPA 70B section 31.5 specifically cites “Square D™ Services’ Procedures for Start-up and Commissioning of Electrical Equipment” as acceptable testing procedures along with NETA and manufacturer testing specification.*
- Our qualified technicians are knowledgeable in the latest design specifications and product developments.
- We offer on-site assistance with the integration of products on complex projects.

*Square D Services is now Schneider Electric Field Services



Extended Warranty

Schneider Electric equipment is engineered for demanding applications. Although our electrical distribution equipment is among the most reliable in the industry, having an extended warranty in place promotes budget stability.

Overview of Extended Warranty Coverage

As a leader in electrical distribution, Schneider Electric Field Services offers numerous warranty options that allow customers to protect their investment for years to come.

Why Schneider Electric?

- Our start-up and commissioning services include a 12-month extended warranty, in addition to our standard 18-month equipment warranty.
- Our extended warranties can be customized to meet your needs.
- You can purchase a plan even after the point of sale.
- If spares are available, Schneider Electric will provide temporary replacement equipment until your equipment is repaired.
- We offer an optional in/out warranty that covers costs for equipment removal, transportation to/from the repair shop, and equipment re-installation.



Spare Parts

Schneider Electric understands the criticality of your electrical equipment and the recommended spare parts required to minimize downtime. Our services will evaluate your electric system, identify the equipment that is critical to your operations, recommend specific spare parts, and offer shipping management solutions.

Shipping management solutions: kitting

As box after box of spare parts arrive over time, they have a tendency to get misplaced or lost. To avoid this mayhem and simplify on-site parts management, we offer spare parts kitting options that will consolidate your spare parts into one shipment to your site.

Why Schneider Electric?

- We offer an 18-month warranty on Schneider Electric spare parts.
- Kitting options are available.
- Maintaining a stock of spare parts eliminates long lead times and helps minimize downtime when disaster strikes.
- We provide repair and exchange options, as well as aftermarket products.

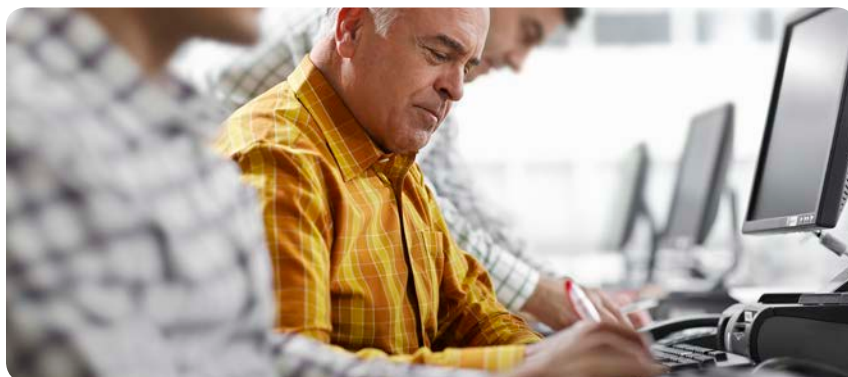


Training

Schneider Electric instructors are experienced engineers and technicians who utilize their real-world experience in the classroom.

Types of training offered:

- Safety training for NFPA 70E including Arc Flash Training and 10- and 30-hour OSHA Certification Courses
- Electrical distribution training for medium- and low-voltage distribution equipment, and distribution substation transformers
- Automation and control training for variable frequency drives, programmable logic controllers (PLCs), Human Machine Interfaces (HMIs), and industrial communications



Why Schneider Electric?

- We have 70+ training courses, available regionally, on-site, or online to meet your needs.*
- IACET-accredited courses are offered for continuing education units (CEUs).
- OSHA-required NFPA 70E safety training is conducted by OSHA Authorized Outreach Trainers.
- Our instructors have received extensive training on how to effectively adapt engineering codes, standards, and factory approved documentation into a classroom setting and real-world application.
- Attendees receive expert instruction, direct from the manufacturer, which provides the most up-to-date materials.
- Competency certificates are awarded.

 **New Virtual Training solutions are available upon request.**

Advantage Service Plans

Service plans mitigate your risk of downtime and unexpected repair costs, providing you with peace of mind.

Without a proper maintenance strategy for your electrical distribution equipment, it's just a matter of time before costly breakdowns will occur. Having an Advantage Service Plan in place minimizes unplanned outages and remedial actions. Should an issue arise, we will ensure prompt response to get you back up and running. Best of all, our fixed-rate service plans take the guess-work out of your budget since there are no hidden charges.

In order to meet current industry standards, our Advantage Service Plans are designed to meet your specific needs and bring you more value. There are three Advantage Service Plans to choose from, offering various levels of service: Plus, Prime and Ultra. Descriptions of each service plan are shown below. You also have the flexibility to choose a term between 1 and 6 years in yearly increments.

Service Provided	Description v	Advantage Service Plans		
		Plus	Prime	Ultra
Technical Support Access	24/7 access to industry-leading expertise.	☑	☑	☑
Preventive Maintenance ^[1]	Regularly-scheduled maintenance and testing performed by qualified service personnel extends equipment reliability and identifies potential issues.	☑	☑	☑
Test Results with Engineer Review and Recommendations	Detailed reporting of maintenance and testing activities, including corrective recommendations.	☑	☑	☑
Guaranteed On-Site Repair Response ^[2]	Labor and travel for on-site response for remedial repairs. 7/24 priority upgrades are available.	—	☑	☑
Repair Parts	Replacement parts used during repair visits, which further improves budget stability.	—	—	☑

Optional Upgrades:

^[1] After-hours preventive maintenance.

^[2] 7x24 priority response and 4-hour response (where available).



Why Choose an Advantage Service Plan from Schneider Electric?

- Our comprehensive preventive maintenance scope of work includes:
 - » Inspections and adjustments
 - » Overcurrent protective device testing
 - » Cleaning and lubrication
 - » Electrical testing
 - » Oil testing
- Advantage Service Plans cover primary electrical distribution system components serving a facility:
 - » Transformers
 - » Motor control equipment
 - » Switchboards
 - » Grounding systems
 - » Switchgear
- Billing can be structured to provide a fixed payment schedule, which will prevent fluctuations to your maintenance and repair budget.
- One service plan can cover multiple manufacturers' equipment.



An effective Electrical Preventive Maintenance (EPM) program satisfies an important part of management's responsibility for keeping costs down and production up.



Source:

NFPA 70B-2013 Edition, Section 4.2.7

Why Choose Schneider Electric Field Services?

As part of Schneider Electric, The Global Specialist in Energy Management™, the Field Services group offers a multitude of solutions to help optimize your equipment's performance from the beginning. **Our solutions help eradicate inefficiency, downtime, and other delays.**

Partner with us to help manage the life cycle of your equipment. We will be there to support you now and in the years to come, from start-up and commissioning, to training, to annual preventive maintenance.

Our nationwide team is committed to providing you with innovative solutions, best-in-class 24/7 technical support, advanced technical knowledge, and exceptional quality in everything we do!

Our culture of safety helps mitigate your risks.

- > **Our North American Operating Division is one of an elite group of companies to simultaneously hold the Robert W. Campbell Award (2009) and the Green Cross Award (2011).**
- > **The National Safety Council has recognized Schneider Electric with over 50 "Operational Excellence" safety awards in each of the past three years.**
- > **Schneider Electric holds third-party audited OHSAS 18001 certification for its Safety Management System and ISO 14001 certification for its Environmental Management System.**

For more information:



888-778-2733



Visit www.schneider-electric.us/go/fieldservices

Any engineering services referenced herein shall be provided by Schneider Electric Engineering Services, LLC, a wholly-owned subsidiary of Schneider Electric USA, Inc. This document is for information purposes only and is not meant to be construed as an offer to provide engineering services.

Schneider Electric USA

1415 S. Roselle Road
Palatine, IL 60067
Tel: 847-397-2600
Fax: 847-925-7500
www.schneider-electric.com/us